

2020 Annual NGEC Meeting

Charger Locomotive Deployment, California Experience



Kyle Gradinger
Division of Rail and Mass Transportation
California Department of Transportation



The NGEC will provide national leadership in standardization, acquisition, financing and management of passenger rail equipment.



Availability Trend of California Charger Units in Service



Oct-Dec '19: 78.75% availability*



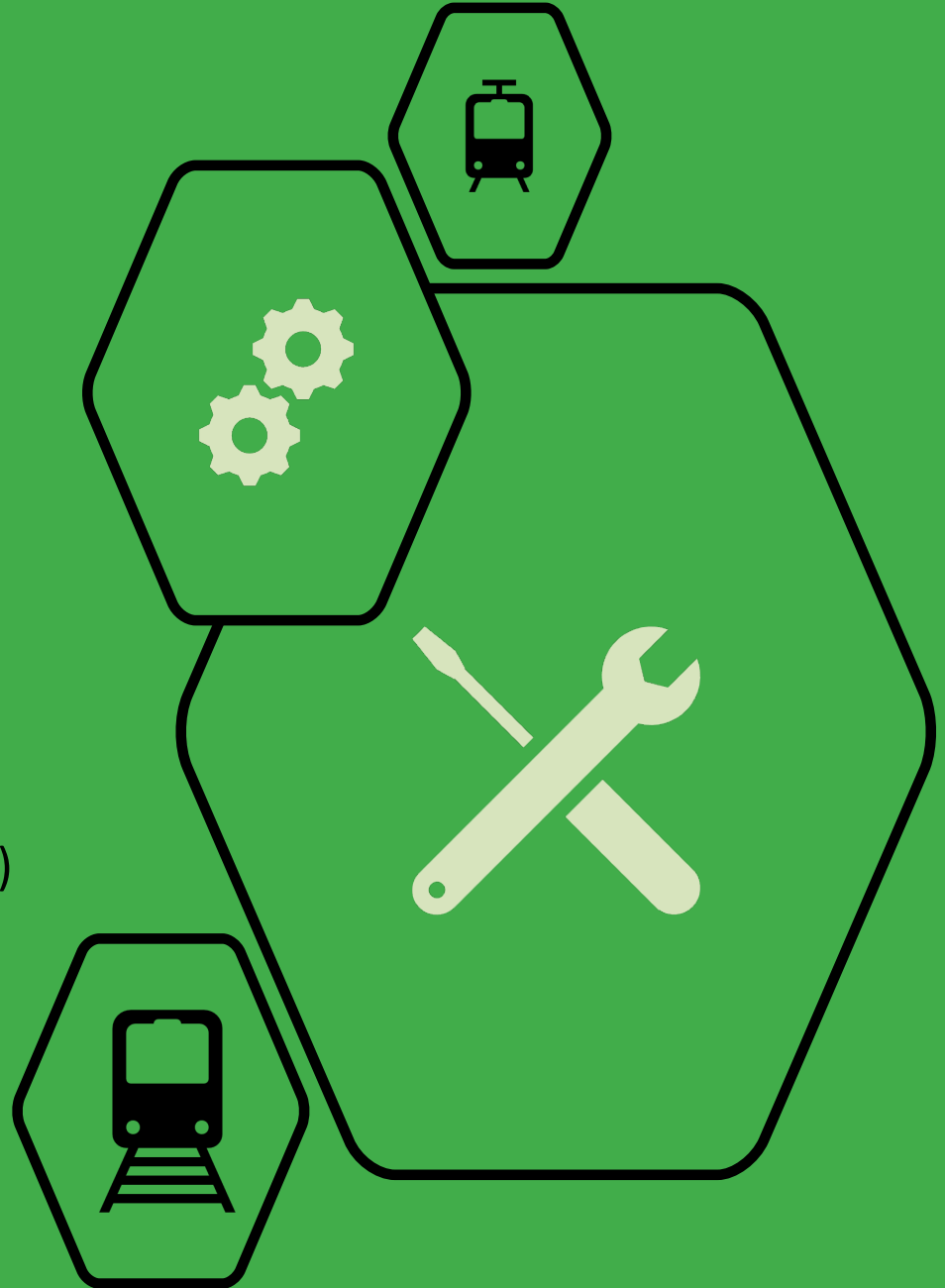
Oct-Dec '18: 71.25% availability*

*including PM and wreck status



Reasons for Unavailable California Units

- Wreck Repairs
- Field Modification Instructions
- Special project (Renewable Diesel)



California Charger Locomotive Experience

Pros

Cons

Additional Safety Features

Powerful engines and OTP

Cleaner burning

Improved suspension and on board computer

Long wait for corrective/preventive parts

LCC initially high, getting continuously improved

Multiple region-specific software changes

Any Questions?

Kyle Gradinger

Assistant Division Chief

Rail and Mass Transportation, Caltrans

(916) 653-0243/kyle.gradinger@dot.ca.gov

Momoko Tamaoki

Office Chief, Assets and Equipment

Rail and Mass Transportation, Caltrans

(916) 654-4727/momoko.tamaoki@dot.ca.gov

THANK YOU!



The NGEC will provide national leadership in standardization, acquisition, financing and management of passenger rail equipment.



The NGEC will provide national leadership in standardization, acquisition, financing and management of passenger rail equipment.