



U.S. Department
of Transportation
**Federal Railroad
Administration**



OFFICE OF RESEARCH & DEVELOPMENT

PRIIA Section 305 NGEC Accessibility Working Group Update

Melissa Shurland/Kevin Kesler
Office of Research and Development
Office of Railroad Policy and Development

Agenda

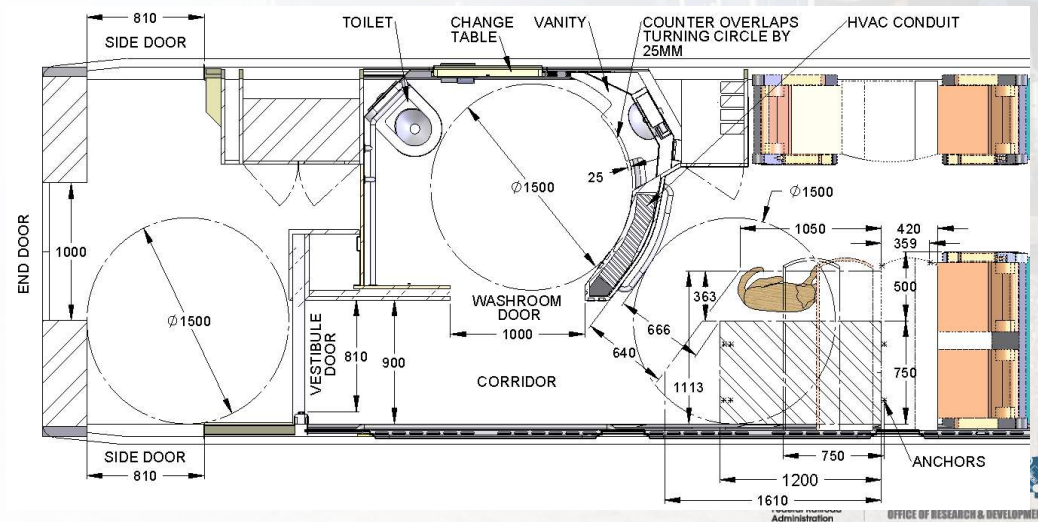
- Background and Objective
- Accomplishments
- Path forward
- Open Discussion



Background and Objective

The Accessibility Working Group was established in the Technical subcommittee on July 14, 2011

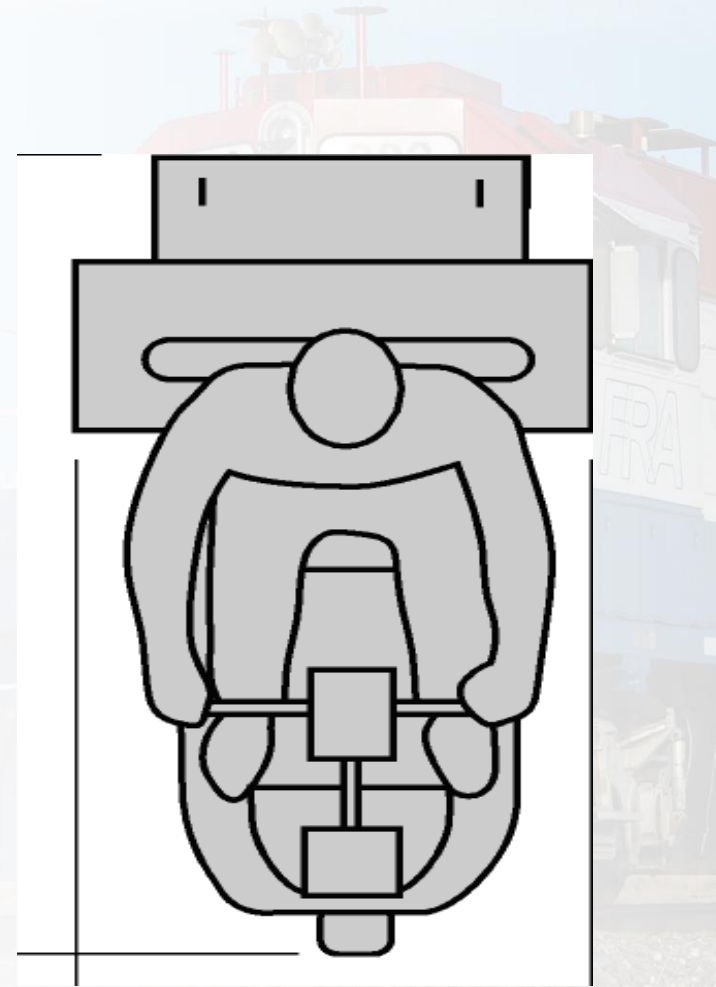
- Objective - review the current and future needs of passengers with disabilities, and making recommendations to the Technical subcommittee on how best to address those needs in the most cost-effective and reasonable manner.



Accomplishments

Successful implementation of recommendation for accessibility in the bi-level specification requirements document

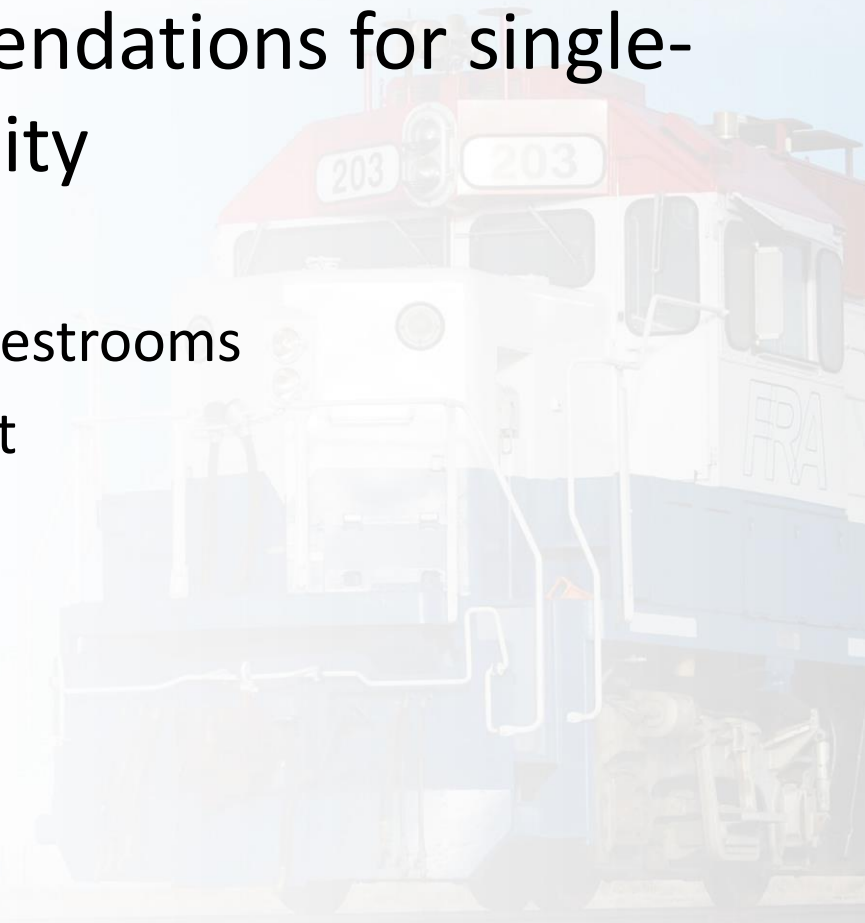
- 800 lbs. design load for carborne mobility aid lift
- 30 inches y 54 inches clear surface for carborne mobility aid lift
- 44 inches width in vestibule
- 32 inches by 59 inches accessible seating location space



Path Forward

Continue work on recommendations for single-level and trainset accessibility

- Dual mode communication
- Automatic controls in accessible restrooms
- Emergency evacuation equipment



Thank you
Any questions?

